

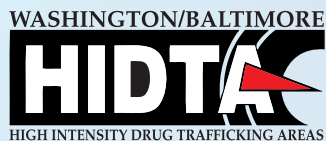
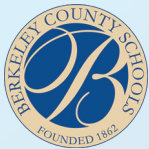


THE MARTINSBURG INITIATIVE

EFFECTIVE PREVENTION A New Vision and Model for Success

The growing opioid epidemic is undermining our entire society. Despite our best efforts, however, the problem has only become worse. Bold and innovative ways of thinking, organizing, and acting are called for and a new model of thinking and action is required.

The Martinsburg Initiative is an original and comprehensive model solution on the cutting-edge of the practical application of recognized science. TMI is a new paradigm for connecting the entire range of ACEs interventions to prevent Opioid Use Disorder and other Substance Use Disorders as children grow to adulthood. TMI maximizes and coordinates family and community-building resources, providing a holistic vision linking law enforcement, schools, communities, and families in a dynamic partnership. The community-based approach at long last delivers effective prevention to the multi-level strategy of enforcement, treatment, and prevention – essential to finally winning the war on drugs.



A Dynamic Partnership with Shepherd University

Shepherd University's commitment to service-learning, engagement, and community-building is crucial to The Martinsburg Initiative. Shepherd not only provides technical services and volunteers from several departments but also engages faculty, staff, students, and community members as co-creators of knowledge and learning.

Focusing upon TMI-engaged children, Shepherd University is undertaking an applied, longitudinal study, tracking changes over time for children, families, classrooms, and the community. Expected outcomes include improvement in behavioral, performance, and environmental areas that correlate directly to reducing future illegal drug use. These performance outcomes will be measured by tracking and assessing: improved grades; better school attendance; reduced reported and observed negative behaviors; decreased medical problems and health issues; increased developmental and capacity for resiliency; and positive attitudes towards school and the police by children, families and the community.

EXECUTIVE BOARD A diverse leadership team provides strategic planning, overall direction, and coordination of TMI operations and objectives. The Executive Board includes: **Maurice Richards, Ed.D.**, Chief of Police, Martinsburg Police Department; **Manny Arvon**, Superintendent, Berkeley Schools; **Virginia Hicaks, Ph.D.**, Assistant Provost for Academic and Community Outreach, Shepherd University; **Tom Carr**, Executive Director, Washington/Baltimore HIDTA; **Penny Porter**, CEO, United Way of the Eastern Panhandle; **Katie Spriggs**, Program Director, Shenandoah Women's Center; **Tiffany Hendershot**, Clinical Social Worker, Berkeley County Schools; **Rev. Julie Harris**, Vice President, Berkeley County Ministerial Association; **Veronique Walker, Ed.D.**, Associate Superintendent, Equity and Inclusion, Berkeley County Schools; **William Ihlenfeld**, former United States Attorney for the Northern District of West Virginia; **Michael Brumage, MD**, Executive Director and Health Officer, Kanawha-Charleston Health Department; **Steven Roach**, Educator, Berkeley County Schools; **Stacie Rohn**, Chief Professional Officer, Boys and Girls Club of the Eastern Panhandle; and **Jim Johnson**, Director, West Virginia Office of Drug Control Policy.

For more information, contact:

Chief Maurice Richards, Ed.D., Martinsburg Police Department
m_richards@martinsburgpd.org

Superintendent Manny Arvon, Berkeley County Schools
mparvon@k12.wv.us

President Mary Hendrix, Ph.D., Shepherd University
mhendrix@shepherd.edu

Executive Director Tom Carr, Washington/Baltimore HIDTA
tcarr@wb.hidta.org

www.MartinsburgPD.org/martinsburg-initiative



THE MARTINSBURG INITIATIVE

A POLICE/SCHOOL/COMMUNITY PARTNERSHIP PREVENTING OPIOID USE DISORDER, BUILDING STRONG FAMILIES, AND EMPOWERING COMMUNITIES

THE MARTINSBURG INITIATIVE

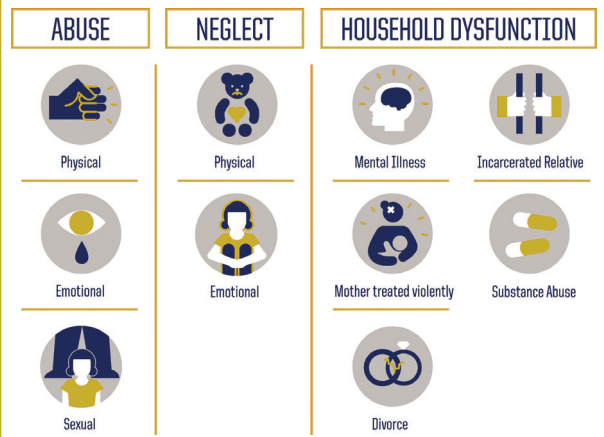
A Model Solution to a National Problem

The Martinsburg Initiative (TMI) is an innovative, multidimensional partnership that has developed a model solution to the crisis of Opioid Use Disorder and the general problems of other substance use, misuse, and substance use disorders. Spearheaded by the Martinsburg Police Department, Berkeley County Schools, Shepherd University, and Washington/Baltimore HIDTA, the partnership embraces a wide array of community, faith-based, health, education, and law enforcement leaders and organizations. Through a strategic focus that targets at-risk children and troubled families, the initiative assesses, identifies, and eliminates many of the basic causes of drug abuse. Grounded in science and focused upon a family-based, school-centered, and community-building approach, The Martinsburg Initiative is strengthening families, empowering communities, and will provide the long-term solution to the devastating impact of Opioid Use Disorder.

Across the United States, the opioid epidemic is growing at a continually accelerated pace. While common wisdom now recognizes that the only way out of the opioid crisis is to simultaneously wage the fight on multiple levels of enforcement, treatment, and prevention – prevention remains the most important and effective long-term solution to the challenge. Realistically, we will never be able to significantly reduce the supply of illegal drugs until we reduce the demand for them. Enforcement and treatment strategies are well understood, articulated, and supported—but an effective prevention strategy has until now, remained elusive.

While multifaceted in scope, The Martinsburg Initiative's primary objective is focused on opioid prevention. This groundbreaking effort applies the pioneering science of Dr. Vincent Felitti's Kaiser Permanente Adverse Childhood Experiences (ACE) Study through an inventive community and neighborhood school-based strategy that has never been done before.

THREE CATEGORIES OF ACEs

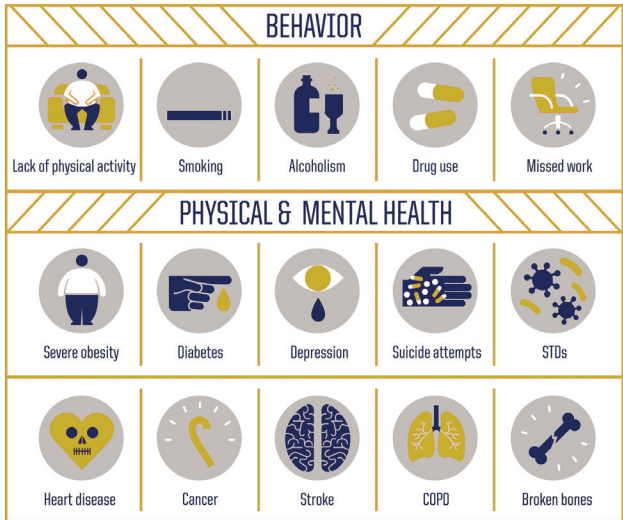


Centers for Disease Control and Prevention | Credit: Robert Wood Johnson Foundation

Adverse Childhood Experiences

Throughout a person's life, adverse childhood experiences negatively impact physical and mental health, cognitive and social development, and ability to function as a productive adult member of society. As a child's number of ACEs increase, so does the probability of adult dysfunction.

INCREASED HEALTH RISKS LINKED TO ACEs



Centers for Disease Control and Prevention | Credit: Robert Wood Johnson Foundation

When the number of ACEs reaches six, health and behavior risks increase exponentially. For example, a child with six ACEs has been found to be 4,600% more likely to be an intravenous drug user as an adult than a person with zero ACEs. A child with six ACEs is up to 5,000% more likely to be a future suicide or an attempted suicide. By reducing or mitigating the number of adverse childhood experiences in an individual child, we dramatically reduce the likelihood of future opioid abuse use along with other serious behavioral risks, social dysfunction, and probability of early death. The Martinsburg Initiative is unique in its application of the ACE study through a new type of police-school-community partnership.

The Unique Connection Between Police and Schools

The police and the school have a unique and special connection with dysfunctional families and at-risk children. For many troubled children and their families, the school and the police are often their only positive connection with hope, safety, and stability. The school environment is perfectly suited for ACEs based intervention. Regardless of the type of ACE trauma being endured in the child's dysfunctional family or social environment – domestic violence, substance abuse, physical and/or sexual abuse, incarcerated or divorced parents, etc., children will usually be spending the majority of their day in the protection of the school

environment. In this secure setting, needs can be assessed, interventions developed, and impacts evaluated.

As the different ACEs are identified, addressed, and eliminated in individual children, local public schools will more effectively provide the positive alternatives young people need to effectively resist drugs. To accomplish this however, we must expand the mission far beyond the present one. The vision of The Martinsburg Initiative includes a new type of connection and networking of new and existing programs as a central component of our comprehensive opioid prevention plan. By transforming the local school into a focal point for positive family and neighborhood activity, a foundation will be established for community-building and empowerment.

The Vital Role of the Family

Throughout the course of human history and across diverse cultures, the family unit is recognized as the basic building block of individual morality and of a stable, productive society. The vital role of the family in maintaining social cohesion is universally acknowledged irrespective of time, place, or society. All education begins in the home, and parents provide the most important influences in determining cognitive ability, emotional development, language skills, and behavior.

It is within the family context that children build the foundation of their moral values, personal and social responsibility, and self-control. It is recognized that negative behaviors including substance abuse, delinquency, domestic violence, and other criminal behavior are transmitted from one generation to the next. We have a vested interest in promoting strong families and good parenting. Recognizing and supporting the primacy of the family is in the best interests of society and has always been an integral part of effective policing and education.

“... a child with six ACEs has been found to be 4,600% more likely to be an intravenous drug user as an adult ...”

The Role of the Police

Whether tacitly, through the proper use of police discretion, or more directly through dramatic changes in law, police procedure, and public policy, the profound dedication by police to protect families has always been clear. Taking this commitment to a new level, The Martinsburg Initiative is part of a transformational change in policing. As the Martinsburg Police Department has proved, agencies built on a solid community policing foundation find the increased focus to support families an easy transition.